



UE Chair



UE-GAHS

In today's environment health and well being is a major priority and deserves products that are design specifically with healthy lifestyle. Innovation and ergonomics are our primary focus as you perform your daily activities.





UE-GAMS





UE-AHS



Developed with the quality of your health and life in mind,
we created an innovative, ergonomic chair to help you maintain a neutral posture
and provide you with the ultimate in comfort whether at home or in the office.



UE-AMS



Cored Design I: Chasing Back Ergonomic Technology

Hug waist and release coccyx pressure at working position

Cervical spine ●

Thoracic spine ●

Lumber spine ●

Sacrum ●

Coccyx ●



Scientific innovation with 11 Adjustable Locations, incorporated in almost every movement of the human body, Target 5 core areas of ergonomics.

Your core is a complex series of muscles, extending far beyond your abs, including, everything besides your arms and legs. It is incorporated in almost every movement of the human body. These muscles can act as an isometric or dynamic stabilizer for movement, transfer force from one extremity to another, or initiate movement itself. Our design target 5 core areas.

Cored Design II:

Backward Recline Adjustment

Backrest recline resistance strength can be adjusted, ergonomic design for all people's need



4-Lock Synchronized Tilt Backward Adjustment

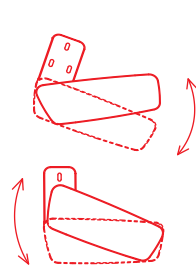
Anywhere, Anytime,
Just one click to get right angle position.



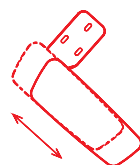
Depth Adjustable Seat



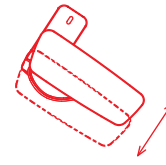
Height Adjustment



Pivoting Adjustment



Sliding Armpad



Width Adjustment

Statement Of Line

Please reference the UE price list for full statement of line and the complete offering of material options.



Basic Model UE-BMS
3D/2D Armrest
3-Lock/1-Lock
Nylon Seatpad with Integrated sliding device



Standard Model UE-AMS
3D/2D Armrest
5-Lock with Back/Seat forward tilt
Nylon Seatpad with Integrated sliding device



Standard Model UE-GAMS
Grey Frame
4D Armrest
5-Lock with Back/Seat forward tilt
Nylon Seatpad with Integrated sliding device



Standard Model UE-GAMSP
Grey Frame
4D Armrest
4-Lock with seat sliding
Wooden Seat with PP shell bottom



Premium Model UE-AMS-N(Mesh Seat)
4D Armrest
4-Lock
Nylon Seat frame with Integrated sliding device



Premium Model UE-GAMS-N-ALArm
Aluminum Polished Static Armrest
4-Lock
Nylon Seat frame with Integrated sliding device

Headrest Options

Lumbar Options

Uph. PU Headrest

Mesh Headrest



Uph. PU Lumbar



PP Lumbar

Back Accent Options



Black Hi-gloss Accent



Chrome Accent

Arm Options



4D Grey Adjustable Arm



3D/2D Grey Adjustable Arm



4D Black Adjustable Arm



3D/2D Black Adjustable Arm



Black Fixed Arm with ABS Pad



Black Fixed Arm with Soft
PU Pad



Aluminum Polished Static Armrest
with Soft Pad

Details



Syncro tilt with 3-Lock/1-Lock position



Full Syncro tilt with 5-Lock position
Back/Seat with forward tilt.

Full Syncro tilt with 4-Lock position
with/without Seat sliding function



Aluminum Polished Base



Grey Nylon Base



Black Nylon Base



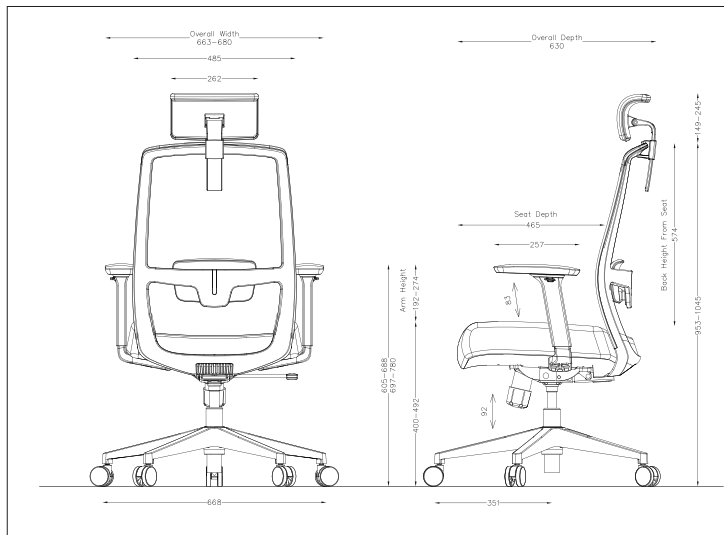
Grey PU Soft Castor



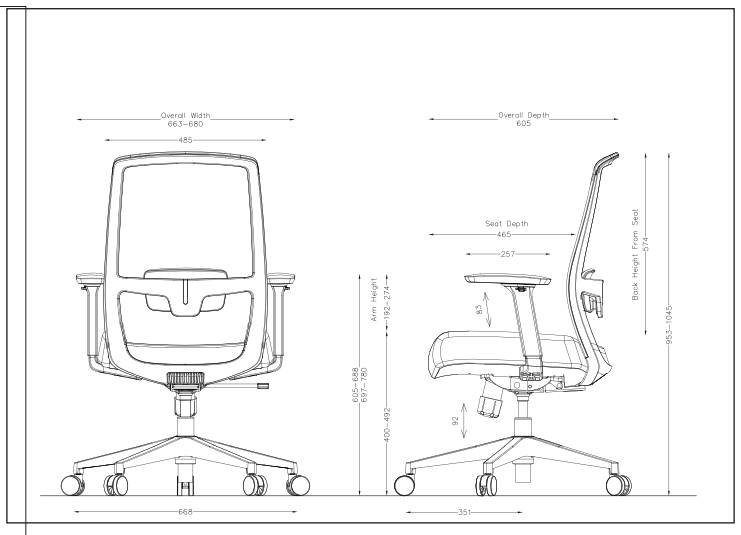
Black PU Soft Castor



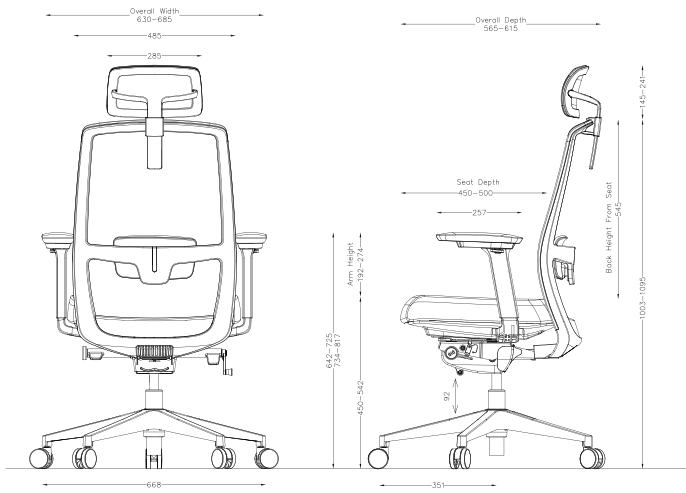
Black Nylon Castor



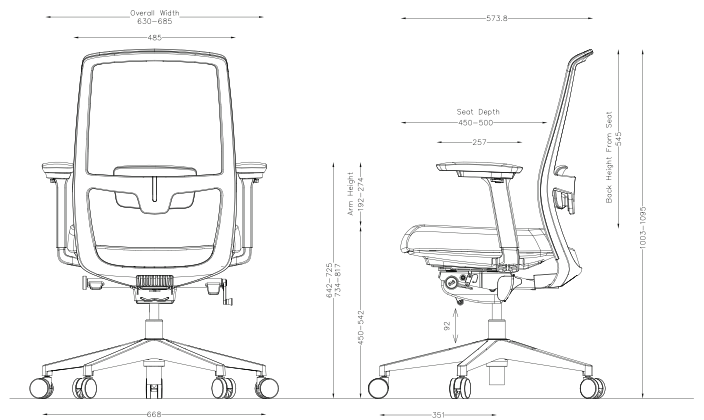
UE-BHS



UE-BMS



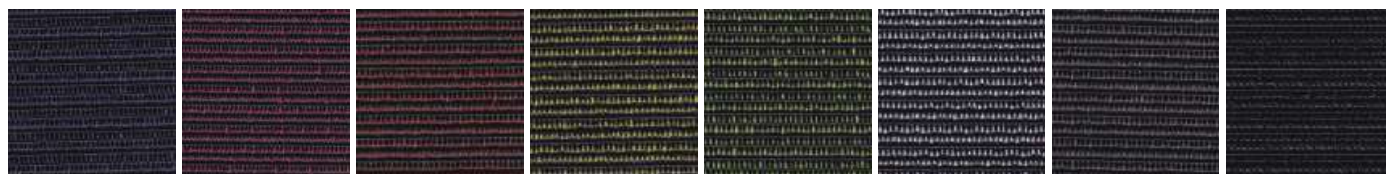
UE-AHS



UE-AMS

Mesh For Backrest

NB Series



NB03

NB04

NB05

NB06

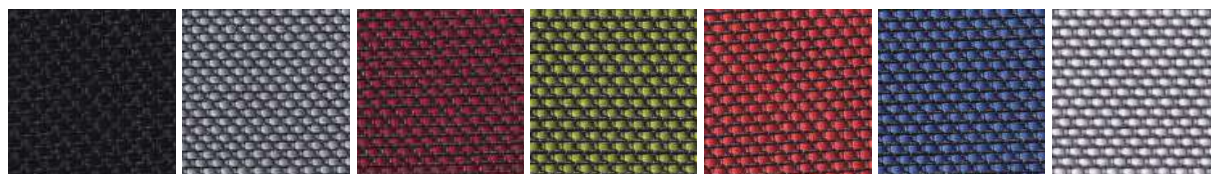
NB07

NB08

NB09

NB10

MD Series



MD01

MD02

MD03

MD04

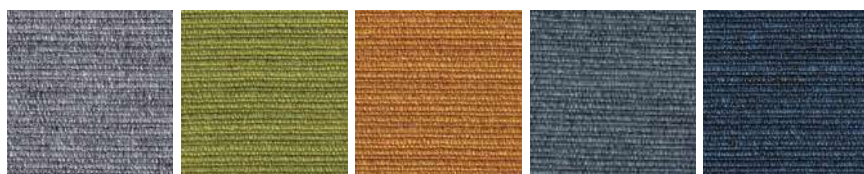
MD05

MD06

MD07

Fabric For Seat

FE Series



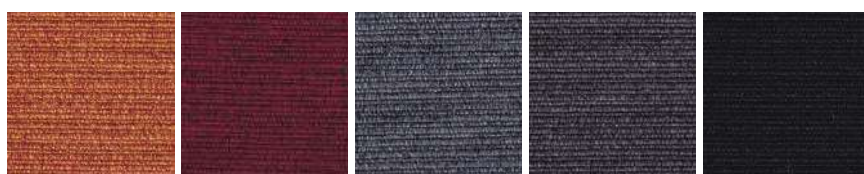
FE03

FE04

FE05

FE08

FE09



FE12

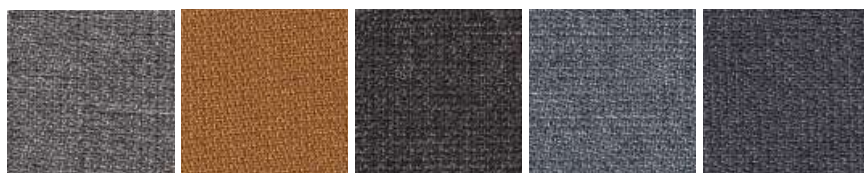
FE13

FE16

FE17

FE18

FJ Series



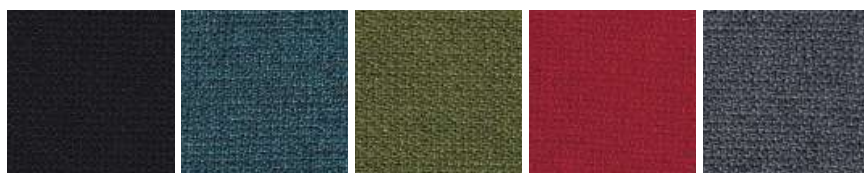
FJ-02

FJ-03

FJ-07

FJ-09

FJ-13



FJ-16

FJ-22

FJ-30

FJ-43

FJ-51D

Mesh Options



MD01 Black Mesh



NB10 Black Mesh



**IMAGE
TECH**

#3105, 2nd Floor, Indiranagar Double Road,
Eshwara Layout, Indiranagar,
Bengaluru 560008, Karnataka, INDIA

T : +91 97404 78066

E : sales@imagetechfurniture.com

W : www.imagetechfurniture.com